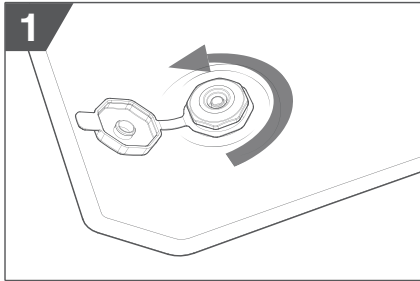


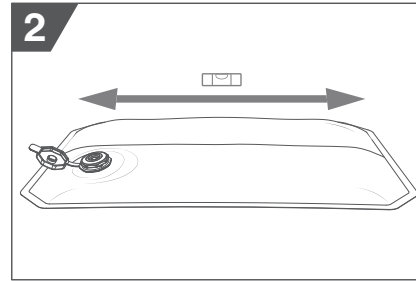


**VRS**  
VACUUM  
RIGIDIZING  
STRUCTURE  
  
LEAVE  
AN  
IMPRESSION™

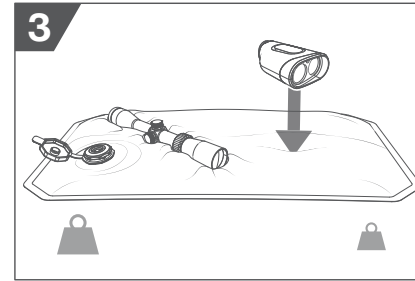
## VRS® System Instruction for Rigidization



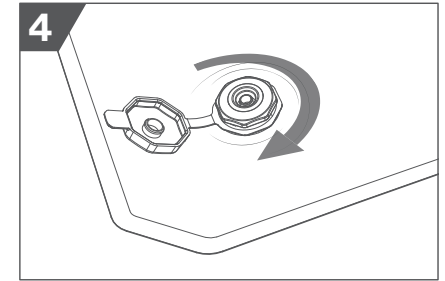
Open the valve with 1/2 turn.  
No need to fully remove.



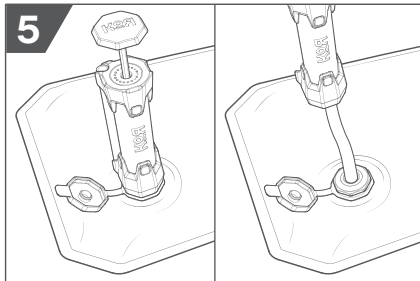
Level out the panel  
and the panel contents.



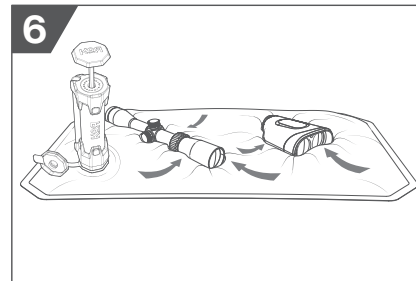
Nestle objects into place, start with  
heaviest/largest objects first.



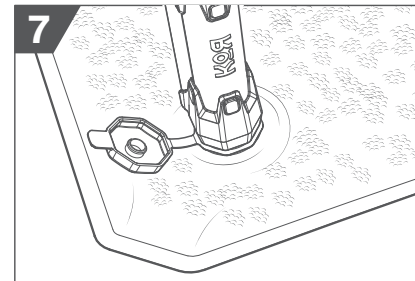
Once placed, close the valve securely.



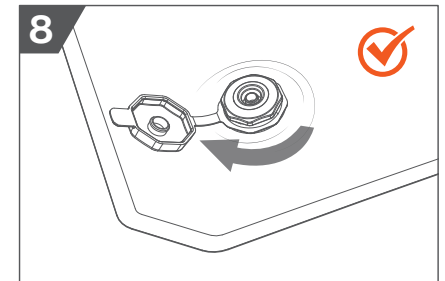
Attach the pump to the valve  
or insert the hose into the valve.



With the pump, pull a vacuum  
until the panel is malleable.  
Use your hands to massage the  
media into place as desired.

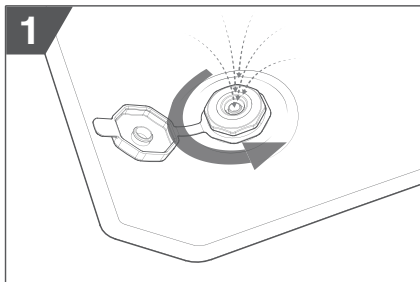


Reattach the vacuum pump and  
pull out the air until the panel is  
completely rigid.  
(media texture shows through the fabric  
when the panel is fully rigid)

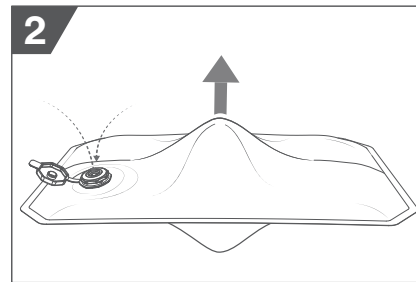


After the vacuum is pulled, tighten  
the valve a 1/4 turn and ensure the  
cap is secured in place.

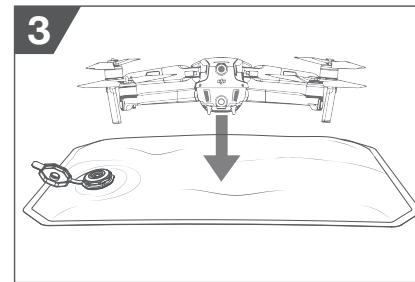
## VRS® System Instruction to reuse Panel



Open the valve with 1/2 turn to  
release vacuum.



Pinch the fabric in the middle of the  
panel and move up and down to make  
the media in the panel fluid.



Repeat steps 1-8 to reset the panel  
with new positions or new items.

## Instructions for Storage

The KOR® Panel may be stored  
in any vacuum state,  
however, always keep the valve  
tightly closed and the valve  
cap installed.

[WWW.KORTECHNIK.COM](http://WWW.KORTECHNIK.COM)